



SCORM STUDENT

INTRODUCTION	2
ACCESSING A SCORM MODULE	2



Introduction

The SCORM tool enables designers to import content packages created outside of WebCT. SCORM stands for Sharable Content Object Reference Model. These content packages can contain course content, quizzes and assignments.

SCORM modules can be added to the course content homepage or in a learning module.

Accessing a SCORM Module

SCORM modules can be accessed from the course content home page, within a learning module or by accessing the SCORM tool.

1. Click on the **SCORM** link in the left hand Course Tools menu. The **SCORM Modules** screen displays as seen in figure 13-1.

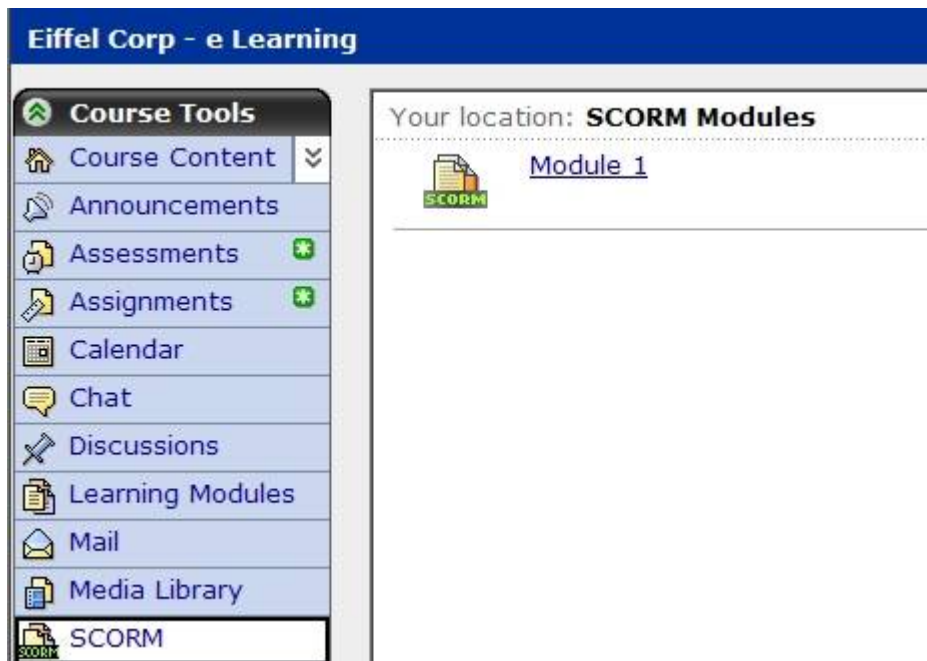


Figure 13-1

2. Click on the title of the module you want to access. In figure 13-1 the Module 1 link would be clicked on. The SCORM module will open in a new window as seen in figure 13-2 on the following page.

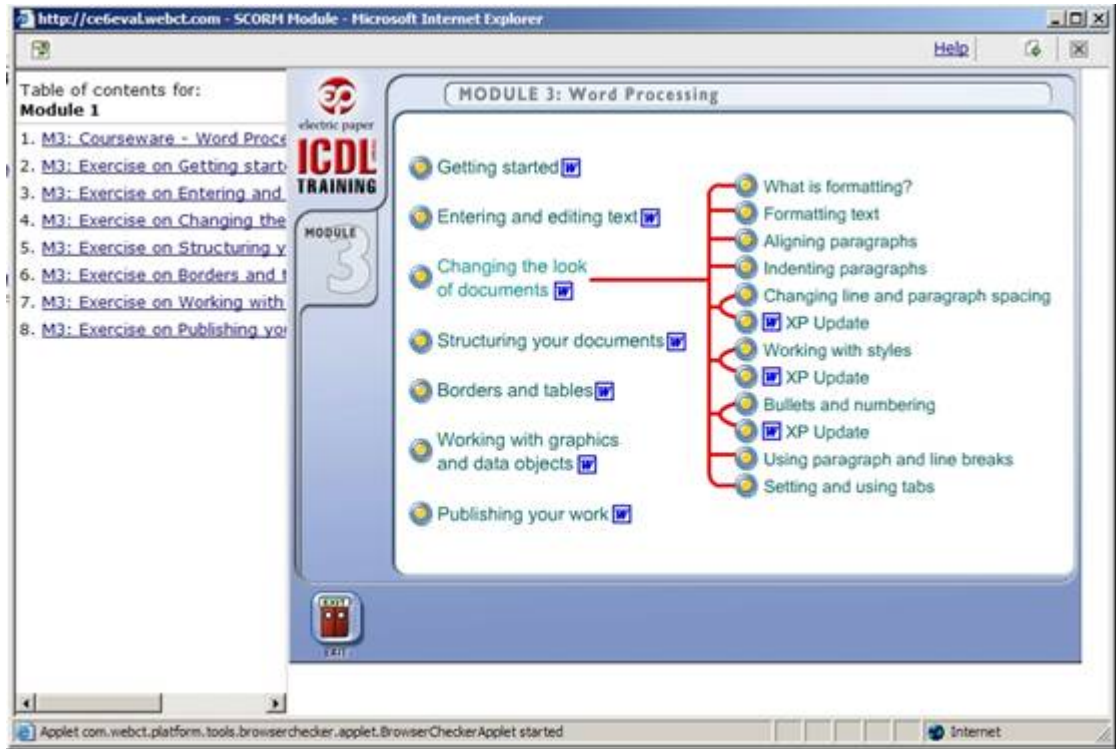


Figure 13-2

The module seen in figure 13-2 is an example of a SCORM module. The layout of the module will vary. In this example you may navigate in the module by using the left hand table of contents. You may also navigate in the right hand frame.

3. Click on the **X** button in the top right hand corner of the module window to close the module.