



WEB LINKS

STUDENT

INTRODUCTION	2
ACCESSING WEB LINKS	2



Introduction

The designer may add a number of links to websites in the course. The web links page is a central page where all the links to Internet sites can be accessed.

Accessing Web Links

Web links can be accessed from the course content home page, from the web links tool or within a learning module in the content or from the action menu. All web links can be accessed from the central Web Links page.

1. Click on the **Web Links** button in the left hand Course Tools menu. The **Web Links** screen displays as seen in figure 12-1.

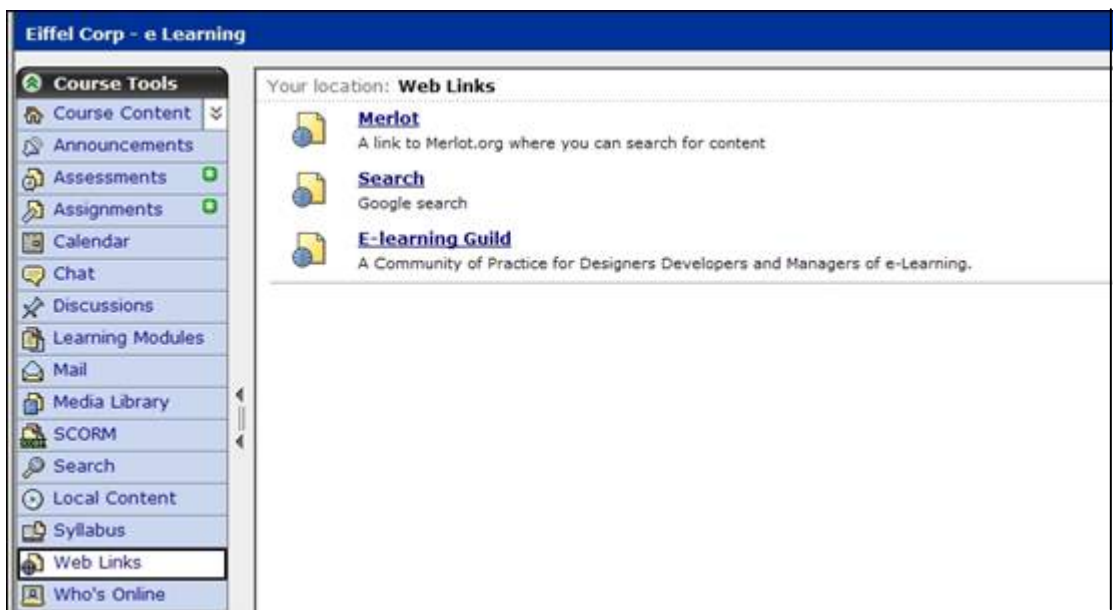


Figure 12-1

The **Web Links** page displays a list of links that have been added to the course. You may access any of the listed links by clicking on the link name.

2. Click on the link you want to access. The website will either open in the WebCT screen (seen in figure 12-2) or in a new window (seen in figure 12-3 on the following page) depending on the designer settings.



Figure 12-2



Figure 12-3

3. Navigate through the website as required.
 4. Click on the X button in the top right hand corner of the new window to close the website if it opened in a new window.
- Or
5. Click on the **Web Links** button in the left hand Course Tools menu if the website opened within the WebCT screen.